



*A Tradition of Quality*  
SINCE 1997



**OLDHICKORYSHEDS.COM**

FACEBOOK.COM/OLDHICKORYBUILDINGS | INSTAGRAM.COM/OLDHICKORYBUILDINGS



# A TRADITION





# OF QUALITY

Using the old fashioned, country tradition of barn building, our factories use the same time-honored construction techniques and respect for quality handed down from generation to generation within the many Amish and Mennonite communities across North America.

With over 700 locations in North America, a huge variety of buildings and options to choose from, you're sure to get the building you need. Old Hickory Sheds has been supplying quality storage buildings for happy customers throughout North America since 1997.

The kind of quality, care and attention to detail that we put into each and every building is how we became leaders in our industry. For over 20 years, we have succeeded by providing our customers with dependable storage solutions and a quality buying experience.

**IT'S NOT JUST ANY OLD SHED...IT'S AN  
OLD HICKORY SHED**

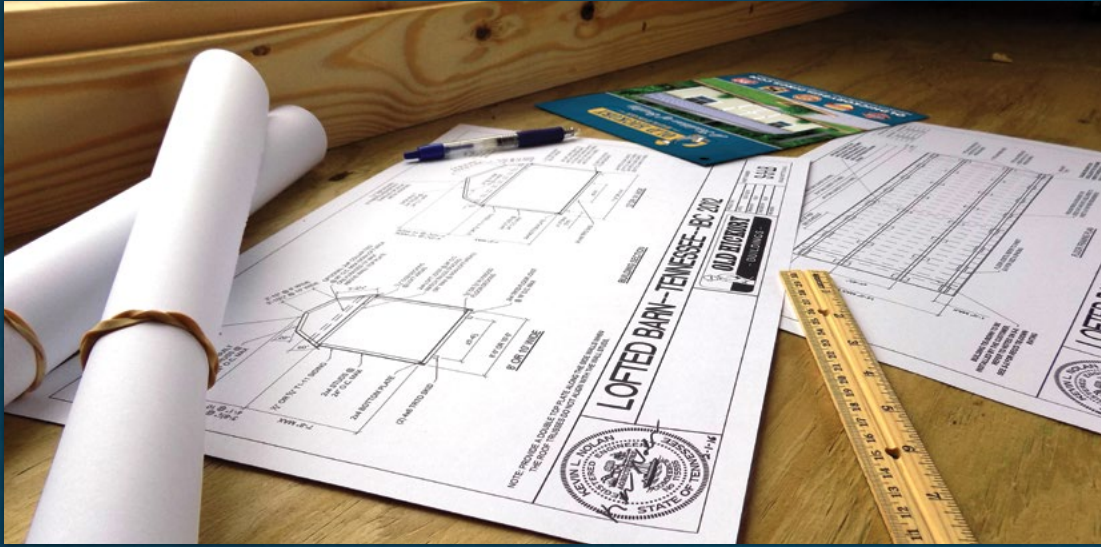


**OLDHICKORYSHEDS.COM**



# The Difference is in the Details.

Old Hickory prides itself on exceeding our customers' expectations. From the first interaction with one of our local independent dealers through delivery and installation, we'll work hard to earn your trust. The kind of quality, care and attention to details that we put into each and every one of our barns is how we became leaders in our industry.



Engineer Certified buildings are certified for 105 mph winds and 30 psf Ground Snow Load (Barn & Utility Shed) or 60 psf Ground Snow Load (Lofted Barn) (once customer supplied anchors are installed). A standard set of engineered plans are available upon request after purchase of a building. We employ a full-time engineer for quick turnaround for custom sites or builds. See page 22, visit our website or consult your local dealer for more details.

## 4x6" TREATED & NOTCHED SKIDS

Our 4in x 6in pressure treated skids are notched at 12in and 16in on center to ensure consistent floor joist spacing. Pressure treated skids resist rot. Recessing and toenailing the joists into the notched skids locks them into place and ensures the shed can be loaded, unloaded and moved repeatedly, without any warping.



## DIAMOND-PLATE DOOR THRESHOLD

The diamond-plate door threshold cap creates a solid step that can handle constant abuse from foot traffic and equipment wheels. It prevents wear and tear on the exposed edges of the floor decking at the entrance of the shed...ensuring years of use without cracking, splintering or delaminating.





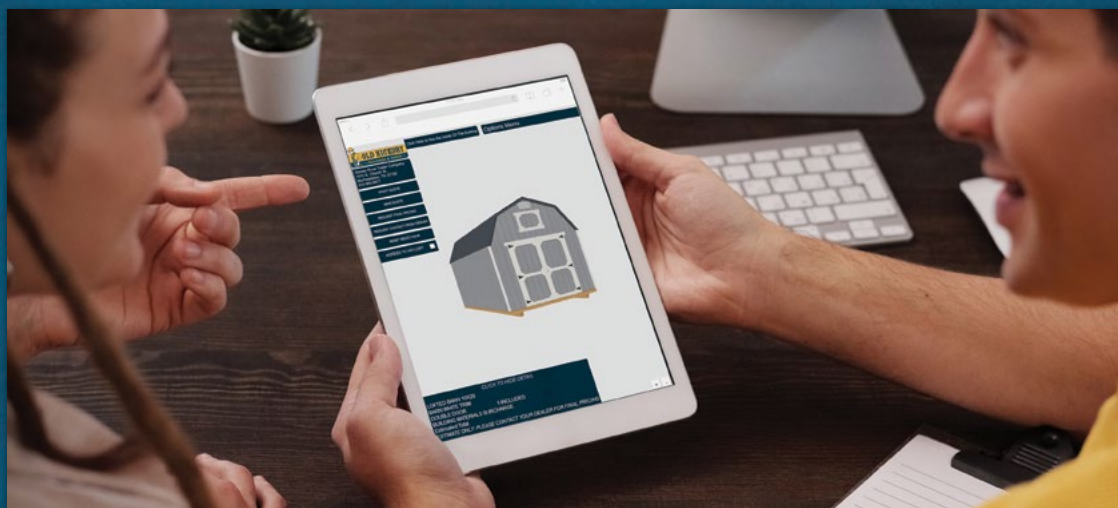
## FAST & EASY DELIVERY

Our experienced delivery drivers provide a hassle-free, efficient delivery experience. There is no site preparation necessary as long as your site is no more than 3ft out of level, in any direction. Our free delivery and set up must be within 30 miles of the sales lot and includes leveling up to 3 feet with customer supplied concrete blocks and driver supplied pressure treated shims. Over 30 miles additional charges apply. Leveling blocks can be purchased from the driver, if needed. See page 21 for details.

## METAL OR SHINGLE ROOF (SAME PRICE)

Give your shed & backyard landscape an upgraded look with our 29-gauge metal roof, available in a wide array of colors and backed by a 30-year limited warranty.

OR...match your home's roof for looks or for HOA compliance using our 30-year rated residential grade architectural shingles, available in the most commonly-used colors.



## USER FRIENDLY 3D SHED BUILDER

Our proprietary online 3D shed configurator is fully loaded with all of our design options and works smoothly on mobile devices and desktops. Because we built our own system, you can be sure the building you design is the building you'll get. Compared to the generic systems shared by other brands, we keep ours fully updated so that it shows the detail of exactly what is being designed, ordered and built.



# Select A Standard Building Style

## LOFTED BARN



With up to 8ft of loft included in the price, the Lofted Barn is ideal for customers needing to maximize their available storage space. The gambrel (barn-style) roof provides a traditional appearance and increases the total loft space. Add a package from pages 7-8 to your Lofted Barn to suit your specific needs.

10ft x 20ft Lofted Barn  
Black Metal Roof  
Gray Shadow Paint and  
Barn White Trim Paint on  
LP Smart Panel Siding  
Shown with extra options:  
two 10" x 29" windows in  
Double Barn Doors, one 2ft x  
3ft Window & a Loft Window.



### KEY FEATURES

- Iconic barn-style roof
- 6ft 3in standard inside wall height
- 7ft (81in inside) available
- Up to 8ft of loft included FREE (No price credit for subtracting loft)
- 8ft wide buildings come with a single barn door
- 10ft and wider come with double barn doors (excluding packages)



FRAMING SPECS VARY BY LOCAL  
BUILDING REQUIREMENTS



MAHOGANY URETHANE & NAVAJO  
TRIM PAINT ON SMART PANEL SIDING

### SIDE LOFTED BARN



FIR SIDING  
Shown with extra options including two 2ft x 3ft windows.



Refer to the Standard Buildings table in the Price Guide to see available sizes.

Scan the QR code or visit [oldhickorysheds.com/priceguide](http://oldhickorysheds.com/priceguide) to view the Price Guide online.



# UTILITY SHEDS

The gable style roof of the Utility Shed provides the option for increased wall height, making it feel more spacious on the inside and leaving room on the walls for taller storage shelves, long garden tools, or ladders. Add a package from pages 7-8 to your Utility Shed to suit your specific needs.

**ENGINEER**  
*certified*

10ft x 14ft Utility Shed  
Brown Metal Roof  
Navajo Paint and Barn  
White Trim Paint on  
LP Smart Panel Siding  
Shown with extra options:  
one 2ft x 3ft Window with  
Shutter Trim, two 10" x 29"  
windows in Double Barn  
Doors and 8ft Tall Walls

## KEY FEATURES

- 6ft 3in standard inside wall height
- 7ft (81in inside) or 8ft (92in inside) available
- 8ft wide buildings come with a single barn door
- 10ft and wider come with double barn doors (excluding packages)

### SIDE UTILITY SHED



**T1-11 PRESSURE TREATED SIDING**  
Shown with extra options including two 2ft x 3ft windows.



**MAHOGANY URETHANE & BARN WHITE TRIM PAINT ON SMART PANEL SIDING**



**FRAMING SPECS VARY BY LOCAL BUILDING REQUIREMENTS**



# Pick An Add-On Package

Whether you're looking for simple home storage, a space for lawn equipment, or if you plan to transform your building into a hobby shop or a recreational space... we've got solutions. Refer to the Add-On Packages table in the Price Guide.

## PLAYHOUSE

The playhouse package is an easy add-on if you're looking to give your barn or shed some country style and a place to sit in the shade.

### Included:

- 9 lite window walk-in door
- 4ft porch  
(included in total building length)
- Two porch support posts
- Three 2ft x 3ft single-pane windows
- Utility style Playhouse has 8ft walls



BEIGE PAINT & BARN WHITE TRIM PAINT  
ON LP SMART PANEL SIDING



FIR SIDING

## SIDE PORCH

With similar features, the Side Porch package is a great alternative to the Playhouse if you're planning to orient the building sideways.

### Included:

- 9 lite window walk-in door
- 4ft depth porch with railing on short side  
(porch included in total building length)
- One porch support post
- Two 2ft x 3ft single-pane windows
- Double Barn Doors
- Utility style Side Porch has 8ft walls



FIR SIDING



MAHOGANY URETHANE & BARN WHITE TRIM PAINT  
ON LP SMART PANEL SIDING

## GARAGE

A rollup garage door can be the ideal add-on for easy-access storage. Recessed diamond plate door threshold helps prevent water from getting into the building during normal precipitation.

### Included:

- Garage Door (8ft or 9ft - see price guide)
- Solid walk-in house door
- One 2ft x 3ft single-pane window
- 12in on center floor joists for heavier loads
- Utility style Garage package has 8ft walls



SCARLET RED PAINT & BARN WHITE TRIM  
PAINT ON LP SMART PANEL SIDING



T1-11 PRESSURE TREATED SIDING



Refer to the Add-On Packages in the Price Guide to see options and prices.

Scan the QR code or visit [oldhickorysheds.com/priceguide](http://oldhickorysheds.com/priceguide) to view the Price Guide online.



PINNACLE RED PAINT & BARN WHITE TRIM PAINT ON LP SMART PANEL SIDING

T1-11 PRESSURE TREATED SIDING

## DELUXE PLAYHOUSE

The Deluxe Playhouse is the ultimate package for creating an outdoor recreational space, DIY studio or home office.

### Included:

- 9 lite window walk-in door
- Bay style windows with wrap around porch (total length of building includes 4ft of porch)
- Porch railing in 3 sections (approx. 4ft each)
- Four porch support posts
- Five 2ft x 3ft single-pane windows
- Utility style Deluxe Playhouse has 8ft walls

Notes: Minimum size is 12ft x 24ft



GAP GRAY PAINT, NAVAJO TRIM PAINT & DRIFTWOOD URETHANE ON SHUTTERS & DOORS ON LP SMART PANEL SIDING

## SHED DORMER

The Shed Dormer adds substantial daylight into your shed, making the inside feel larger and giving the outside a quaint appearance.

### Included:

- Comes standard with a 7/12 pitch roof
- Includes: Three 10in x 29in horizontal windows
- Treated buildings have 81in inside walls
- Painted/Urethane buildings have 82.5in inside walls

Notes: Only available on 8ft, 10ft & 12ft widths and only for inside wall heights listed above. More than one dormer can be added to a building if size permits.

Shed Dormer shown with extra options including two 2ft x 3ft windows with shutter trim and Double Barn Doors with windows.



BLACK METAL ROOF  
BARN WHITE PAINT ON LP SMART PANEL SIDING  
Shown with extra options including a Loft Window.



CHARCOAL METAL ROOF / MAHOGANY URETHANE  
& BARN WHITE TRIM PAINT ON LP SMART PANEL SIDING  
Shown with extra options including Shutter Trim.



# Or Choose A Specialty Building...

## STUDIO SHEDS

With a lean-to roof style, the Studio Shed can be placed with its back against a tree line or a property boundary as a way to integrate the structure in the landscape. The high front can include horizontal windows to let in natural light.

**ENGINEER**  
*certified*

10ft x 10ft Studio Shed  
Black Metal Roof  
Gray Shadow Paint with  
Barn White Trim Paint on  
LP Smart Panel Siding  
Shown with extra options:  
(2) 10" x 29" windows in  
Double Barn Doors



## KEY FEATURES

- Single slope roof style
- Rear Wall Height: 75in – 76.5in (depending on siding chosen)
- Front Wall Height: Minimum 100in (increases with shed width)
- Roof Pitch: 3/12



FRAMING SPECS VARY BY LOCAL  
BUILDING REQUIREMENTS



MAHOGANY URETHANE &  
NAVAJO TRIM PAINT  
ON SMART PANEL SIDING



GAP GRAY PAINT & BARN WHITE TRIM PAINT  
ON SMART PANEL SIDING

Shown with extra options including two 2ft x 3ft windows, three  
10in x 35in windows and one house-style door with 9 lite window.



Refer to the Specialty Buildings table in the Price Guide to see available sizes.  
Not available with Add-on Packages from Pages 7-8.

Scan the QR code or visit  
[oldhickorysheds.com/priceguide](http://oldhickorysheds.com/priceguide)  
to view the Price Guide online.



## BARN NON-LOFTED

If you need just a little extra outdoor storage space for some gardening tools, some lawn equipment or other odds and ends, then the Non-lofted Barn might be the right choice. It's plenty tall enough for the average adult.

**ENGINEER**  
*certified*

10ft x 12ft Barn (Non-lofted)  
Hunter Green Metal Roof  
T1-11 Pressure Treated Siding

## KEY FEATURES

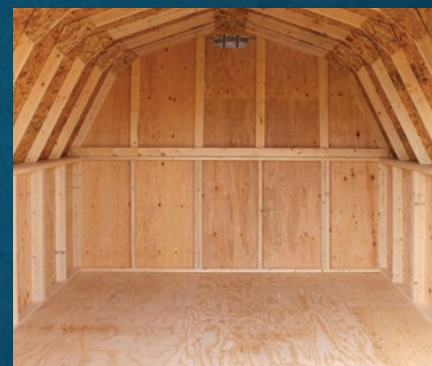
- Iconic barn appearance
  - 4ft side wall height
- 8ft wide buildings come with a single barn door
  - 10ft and wider come with double barn doors



T1-11 PRESSURE TREATED SIDING



RUSTIC RED PAINT & BARN WHITE TRIM  
PAINT ON LP SMART PANEL SIDING



FRAMING SPECS VARY BY LOCAL  
BUILDING REQUIREMENTS



# Idea Gallery



**UTILITY SIDE PORCH PACKAGE / BURNISHED SLATE METAL ROOF  
GAP GRAY PAINT & BARN WHITE TRIM PAINT  
ON LP SMART PANEL SIDING**



**SHED DORMER PACKAGE / BUILD ON SITE  
BLACK SHINGLE ROOF / UNPAINTED LP SMART PANEL SIDING**  
Shown with extra options including two 2ft x 3ft Windows with Shutter Trim,  
Double & Single Barn Doors with Windows & 6in Front & Back Overhang.



**UTILITY SHED / BLACK METAL ROOF  
BARN WHITE PAINT ON LP SMART PANEL SIDING**  
Shown with extra options including two 2ft x 3ft Windows,  
& Double Barn Doors with Windows.



**LOFTED GARAGE PACKAGE / BURNISHED SLATE METAL ROOF  
BEIGE PAINT & CLAY TRIM PAINT ON LP SMART PANEL SIDING**  
Shown with extra options including Double Barn Doors with windows, 9 Lite House-style Door,  
two 2ft x 3ft Windows with Shutter Trim & Loft Window with Shutter Trim.



**SIDE UTILITY SHED / BLACK METAL ROOF  
GAP GRAY PAINT & BARN WHITE TRIM PAINT ON LP SMART PANEL SIDING**  
Shows customer supplied shutters.



**DELUXE LOFTED PLAYHOUSE PACKAGE  
RUSTIC RED METAL ROOF  
T1-11 PRESSURE TREATED SIDING**





**LOFTED PLAYHOUSE PACKAGE / BURNISHED SLATE METAL ROOF**  
**BARN WHITE PAINT ON LP SMART PANEL SIDING**  
 Shown with extra options including two 3ft x 3ft Windows.



**SHED DORMER PACKAGE / BURNISHED SLATE METAL ROOF**  
**MAHOGANY URETHANE & BROWN TRIM PAINT ON LP SMART PANEL SIDING**  
 Shown with extra options including two 2ft x 3ft Windows with Shutter Trim  
 & Double Barn Doors with Windows.



**LOFTED BARN / CHARCOAL METAL ROOF**  
**BARN WHITE PAINT & BLACK TRIM PAINT ON LP SMART PANEL SIDING**  
 Shown with extra options including one extra Double Barn Door & one 3ft x 3ft Window.



**SIDE LOFTED BARN / BLACK METAL ROOF**  
**GRAY SHADOW PAINT & BARN WHITE TRIM PAINT ON LP SMART PANEL SIDING**  
 Shown with extra options including two 2ft x 3ft Windows.



**DELUXE LOFTED PLAYHOUSE PACKAGE**  
**RUSTIC RED METAL ROOF**  
**T1-11 PRESSURE TREATED SIDING**



# Animal Shelters & Build on Site

## ANIMAL SHELTERS

Our Animal Shelters have a 4x6 pressure treated perimeter base to make it deliverable by our drivers yet resist rotting from ground moisture. It's possible to add stalls, separators and even a tack room depending on the size.

12ft x 28ft Animal Shelter with Tack Room  
Silver Metal Roof  
Clay Paint with Beige Trim Paint on LP Smart Panel Siding  
Shown with extra options: (1) 10" x 29" window in Single 3ft Barn Door

### KEY FEATURES

- 4in x 6in Pressure Treated perimeter base
- 1 1/4in Pressure Treated Kick Boards approximately 4ft high, spaced 1.5in apart
- Standard stall opening is 8ft wide
- One stall is standard per 12ft of length (10ft x 12ft = 1 stall, 10ft x 20ft = 1 stall, 10ft x 24ft = 2 stalls). Tack room is not included
- Additional stalls (includes opening and divider) can be added for an additional cost (optional) See Price Guide
- Buildings will be set directly on ground with no blocking. Ground must be suitable for application prior to delivery

### TACK ROOM

- Tack rooms require a minimum of 4ft added to the 12ft of length needed per stall (E.g. 1-stall plus a 4ft wide tack room requires a minimum of 16ft total length)
- Tack Room starts on an outside end wall. Additional cost to start on an inside divider wall. See Price Guide
- Engineered panels or T&G flooring depending on area & availability
- OSB divider wall between tack room and stall
- 3ft Wooden Barn Door on all tack rooms
- Upgrade to 4ft Wooden Barn Door. See Price Guide



Interior Tack Room shown with extra options including 2ft x 3ft window and extra Single Barn Door



Refer to the Animal Shelter table and Build on Site section in the Price Guide to see available sizes.

Scan the QR code or visit [oldhickorysheds.com/priceguide](http://oldhickorysheds.com/priceguide) to view the Price Guide online.



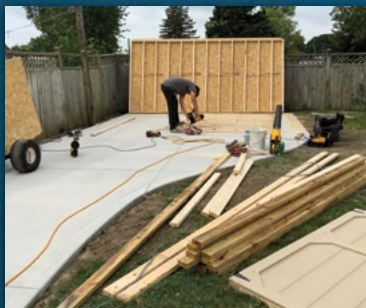
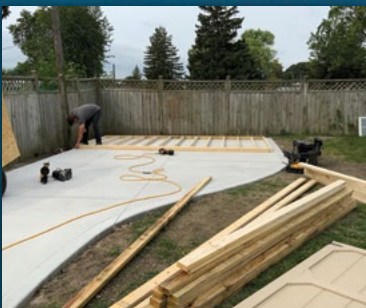
## BUILD ON SITE

Build on Site is a great option for customers looking for unique features or a larger shed than we can pre-build and deliver. It's also a good alternative when the intended location for the building isn't accessible by a delivery truck.



## OPTIONS & LIMITATIONS

- May be able to build larger sizes (length, width or height) than can't be delivered by truck (E.g. 8ft walls on Lofted Barns)
  - Can be built directly on a concrete pad without skids or floor decking (customer is responsible for tie downs)
  - Consult your local dealer for other needs and customizations
    - Customer is responsible for painting or sealing
    - Lead times vary by location and time of year
- Small Build on Site fee required and paid directly to the builder
  - May not be available in all areas





# Metal Colors

Same price for Standard Metal or Shingle Roof. See Price Guide for Special Order Metal.

## STANDARD METAL

**RUSTIC RED**

**CHARCOAL**

**BLACK**

**BURNISHED SLATE**

**HUNTER GREEN**

**SILVER**

## SPECIAL ORDER METAL

*Adds one week to the lead-time and has a slight upcharge*



**SEE YOUR  
LOCAL DEALER FOR  
COLOR OPTIONS**

## METAL ADVANTAGES

- 29 Gauge high quality metal
- **30 YEAR LIMITED WARRANTY** | All metal roofing comes with a 30 year limited warranty against rust through
- Provides your building with an upscale architectural appearance
- Does not depend on foreign oil as a raw material
- Metal is 100% recyclable & virtually worry-free

## SHINGLE ADVANTAGES

- Residential grade architectural shingles
- 30 year limited warranty
- Match your home or existing building(s)

## SHINGLE ROOF

**WEATHERED WOOD**

**DARK BROWN**

**BLACK**

\*Actual colors may vary from those displayed in brochure. See dealer for actual color swatch. OHS is not responsible for colors not matching the brochure.



# Paint & Urethane Colors

One Standard Paint Color included in price. See Price Guide for Urethane or Custom Colors.

## STANDARD PAINT

**BARN WHITE**

**NAVAJO**

**BEIGE**

**CLAY**

**BUCKSKIN**

**BROWN**

**GRAY SHADOW**

**GAP GRAY**

**BLACK**

**EVERGREEN**

**PINNACLE RED**

**SCARLET RED**

Standard paints are Sherwin Williams® DuraCraft™. Custom colors must use Sherwin Williams® DuraCraft™ base.



SCARLET RED PAINT & BARN WHITE TRIM PAINT ON LP SMART PANEL SIDING



GAP GRAY PAINT & BARN WHITE TRIM PAINT ON LP SMART PANEL SIDING

## URETHANE STAIN COLORS

**MAHOGANY**

**HONEY GOLD**

**CHESTNUT BROWN**

**DARK EBONY**

**DRIFTWOOD**



CHESTNUT BROWN URETHANE ON LP SMART PANEL SIDING



HONEY GOLD URETHANE ON LP SMART PANEL SIDING

\*Actual colors may vary from those displayed in brochure. See dealer for actual color swatch. OHS is not responsible for colors not matching the brochure.



# Siding Options



## 5/8" T1-11 PRESSURE TREATED

- 24in ON CENTER STUDS / 24in ON CENTER TRUSSES (66% thicker siding easily spans 24in on center stud spacing)
- Double studded at siding seams to resist treated wood's tendency to shrink, same number of studs as 16in on center
- All PRESSURE TREATED wood features a LIMITED LIFETIME WARRANTY against termites and fungal decay
- Tried and true PREMIUM grade REAL PLYWOOD SIDING
- 5/8in thick, 66% THICKER than many competing siding products
- Available Coatings: Water Sealer (only)



## FIR

- 24in ON CENTER STUDS / 24in ON CENTER TRUSSES (66% thicker siding easily spans 24in on center stud spacing)
- Double studded at siding seams to ensure edges are fastened to a full stud
- Our Fir Siding is a LOCAL PRODUCT, made in the northwest from local trees
- Great choice for customers who want a RUSTIC APPEARANCE or who may want to paint it
- Available Coatings: Water Sealer (only)



## 3/8" LP SMART PANEL

- 16in ON CENTER STUDS / 24in ON CENTER TRUSSES / DOUBLE TOP STUD PLATE
- SMARTGUARD TREATMENT makes this engineered wood product WATER RESISTANT
- SMARTGUARD ZINC BORATE TREATMENT provides fungal decay, termite and impact RESISTANCE
- Comes with a 50 YEAR LIMITED WARRANTY
- Available Coatings: Paint & Urethane (only)





# Flooring Options

**YOU CHOOSE:**

**5/8" T&G Untreated Plywood Flooring or  
5/8" T&G Engineered Panels Flooring - Same Price**

Scan the QR code or visit  
[oldhickorysheds.com/priceguide](http://oldhickorysheds.com/priceguide)  
to view the Price Guide online.



## 5/8" TONGUE & GROOVE UNTREATED PLYWOOD

- Features a limited lifetime warranty against delamination of plies

**UPGRADE:**

**3/4in Tongue and Groove untreated plywood (See Price Guide)**

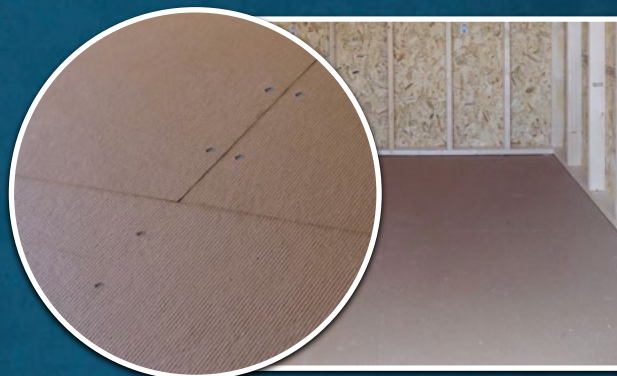


## 5/8" TONGUE & GROOVE ENGINEERED PANELS

- 5/8in Tongue and Groove, Engineered Panels
- Exceptional strength & stiffness for a flatter, more stable floor
- Free of knots and patches with a thermally fused face
- Advanced resins are moisture resistant
- Choose this if you want a seamless floor with a virtually flawless appearance

**UPGRADE:**

**3/4in Tongue and Groove Engineered Panels (See Price Guide)**



**Standard floor designed for 300 lbs. POINT LOAD spread evenly over an area no less than 5 inches by 5 inches.  
Additional options are available. See dealer/website for more heavy duty options.**

# Floor Joist Options

- 16in on center pressure treated floor joists - standard
- 12in on center pressure treated floor joists - *optional* (standard on garages)
- 2x4 Pressure treated floor joists - standard
- 2x6 Pressure treated floor joists - *optional* (standard on 14ft wide and above)





# Options & Add-Ons

See Options & Add-Ons Table in Price Guide

## WINDOWS



24" x 27"  
FOR LOFT

**W1**



2' x 3'  
SINGLE / DOUBLE  
PANE

**W2 / W3S**



3' x 3'  
SINGLE / DOUBLE  
PANE

**W3D / W4S**



SHUTTER TRIM  
SHOWN ON 2'x3'

**W4D**



10" x 35"

**W5**



10" x 29"

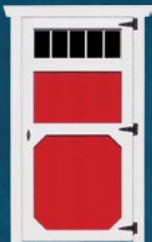
**W6**

## DOORS



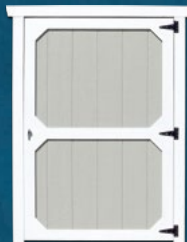
3' SINGLE  
BARN

**D1**



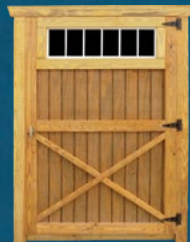
3' SINGLE BARN  
WITH WINDOW

**D2**



4' SINGLE BARN

**D3**



4' SINGLE BARN  
WITH WINDOW

**D4**



DOUBLE BARN

**D5**



DOUBLE BARN  
WITH WINDOWS

**D6**



HOUSE STYLE  
NO WINDOW

**D7**



HOUSE STYLE  
WITH 9 LITE  
WINDOW

**D8**



OPENING  
LOFT DOOR

**D9**



9' x 7' GARAGE

**D10**



8' x 7' GARAGE

**D11**

## PROTECTIVE BARRIERS



HOUSE WRAP VAPOR BARRIER | **P1**



TAR PAPER | **P2**

See Price Guide for all available protective barrier and insulation options.





Scan the QR code or visit  
[oldhickorysheds.com/priceguide](http://oldhickorysheds.com/priceguide)  
to view the Price Guide online.

## SHED WALL HEIGHT



**6'3" WALLS**  
(LOFTED & UTILITIES)



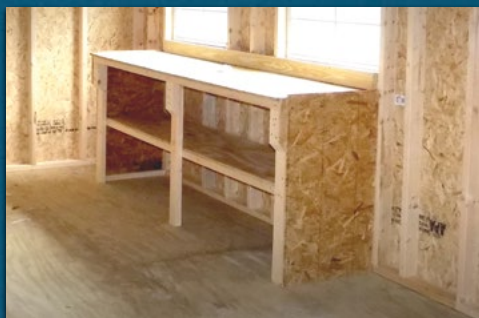
**7' WALLS | H1**  
(LOFTED & UTILITIES)



**8' WALLS | H2**  
(UTILITIES ONLY)

Walls taller than 6ft 3in on Lofted Sheds or taller than 8ft on Utility sheds requires build on site.

## INTERIOR ADD-ONS



**WORKBENCH | I1**



**SHELVES | I2**



**LOFT | I3**

## EXTERIOR ADD-ONS

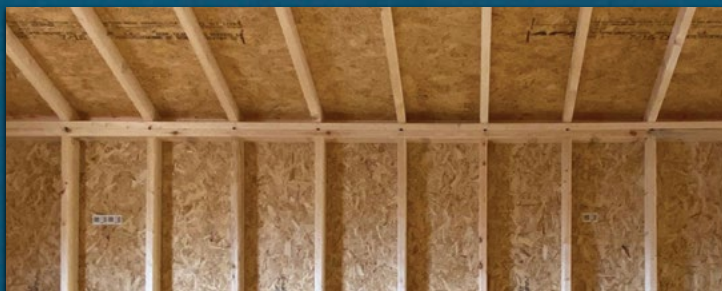


**EXTRA PORCH POST | E1 & PORCH RAILING | E2**

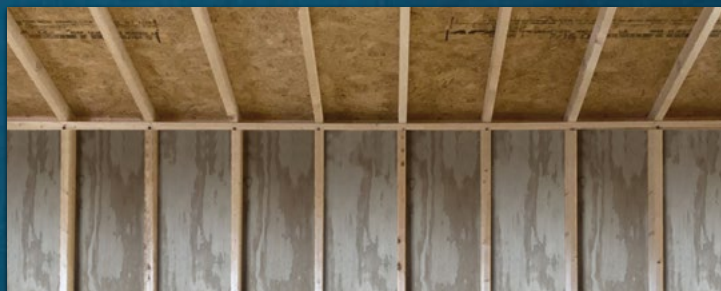


**6" FRONT & BACK OVERHANG | E3 & 7/12 PITCH | E4**

## FRAMING OPTIONS



**16" ON CENTER TRUSSES (PAINTED ONLY) | F1**  
16" on center studs are standard



**16" ON CENTER STUDS & TRUSSES (TREATED ONLY) | F2**



# FREE DELIVERY

## & EASY SETUP WITHIN 30 MILES

---

We will provide you with a quick and efficient delivery experience.  
Delivery site must be accessible with a truck and trailer.



**NO SITE PREPARATION NECESSARY** if site is accessible with truck and trailer and site is **NO MORE THAN 3 FEET OUT OF LEVEL**. **FREE SETUP** includes leveling with customer supplied concrete blocks and driver supplied pressure treated shims. Drivers can supply concrete blocks for a small fee. See Price Guide for details. **FIRST 30 MILES FREE**. Over 30 miles subject to additional charge.

## PLEASE CONSULT YOUR LOCAL DEALER FOR THE MOST UP-TO-DATE DELIVERY LEAD TIMES

**NOTE:** Non-standard metal colors on any building will add to the lead time. Peak season and poor weather conditions can also add extra days on to delivery times. Lead times vary by location and non-standard colors are not available in all areas.

Old Hickory Sheds, LLC and its associates are not responsible for permits, snow/wind load requirements, covenant searches, restrictions, setbacks, yard damage, or underground damage. In very rare cases, underground footers may be required by local building codes. Old Hickory Sheds does not offer digging or footer services and these are not included in free set up, however we can work with customer or contractor when required for an additional cost. Please contact your local Building Inspector and/or Homeowner's Association for information on requirements and restrictions. It is the customer's responsibility to decide if ground conditions are unsuitable for delivery. Old Hickory has the right to refuse any sale prior to the time when it is accepted and approved by Old Hickory's corporate office and the building is set up at customer's location.





Our low monthly rental rates are comparable to mini-warehousing rates. Our no strings attached plan allows you to have your own storage facility at your home or business, when and where you need it.

## NO STRINGS ATTACHED

The rental agreement is on a month to month basis, meaning you have the flexibility to turn in the building at any time for any reason. **SEE DEALER FOR DETAILS.**

## EARLY PAYOFF

Payoff anytime with no penalty. There is also a discount off the rental balance for those who pay off early. You will not own the building until you make all payments necessary to acquire ownership or you exercise the early payoff option.

## 90 DAYS SAME AS CASH

If you decide to pay off the building within 90 days, we'll waive the entire cost of lease services.



**Engineer Certified buildings are certified for 105 mph winds and 30 psf Ground Snow Load (Barn & Utility Shed) or 60 psf Ground Snow Load (Lofted Barn) (wind rating requires customer supplied anchors). A standard set of engineered plans are available upon request after purchase of a building. We employ a full-time engineer for quick turnaround for custom sites or builds. Visit our website or consult your local dealer for more details.**

Price does not include anchors. Additional options are available – see dealer/website for more details. Extra charges apply for custom plans, calculations or elevations. Designed to meet IBC standards, not guaranteed for every local jurisdiction. Our buildings are classified as Minor Storage Facilities (Occupancy Category 1) and not intended for any other use. Economy style Buildings are not certified as a standard. These can be built as certified for an additional charge.

## FIVE YEAR LIMITED WARRANTY

We offer you peace of mind – with a limited 5 year warranty backed by a company that has been in business since 1997, you can trust that Old Hickory will be there if you need them, and with our warranty written, there will be no surprises in the rare event of a claim.

[www.oldhickorysheds.com/five\\_year\\_warranty](http://www.oldhickorysheds.com/five_year_warranty)

## LIMITED LIFETIME WARRANTY

Against termite damage and fungal decay on all pressure treated wood, including pressure treated skids, floor joists (on all models) and optional pressure treated 5/8" T1-11 siding.

[www.oldhickorysheds.com/lifetime\\_warranty](http://www.oldhickorysheds.com/lifetime_warranty)

## 30 YEAR LIMITED WARRANTY ON METAL

All metal roofing comes with a 30 year limited warranty against rust through.

## 50 YEAR MANUFACTURER'S WARRANTY

For LP Smart Panel Siding. Follow the link provided for more information:

[www.lpcorp.com/media/1419/lp-smartside-warranty-english.pdf](http://www.lpcorp.com/media/1419/lp-smartside-warranty-english.pdf)



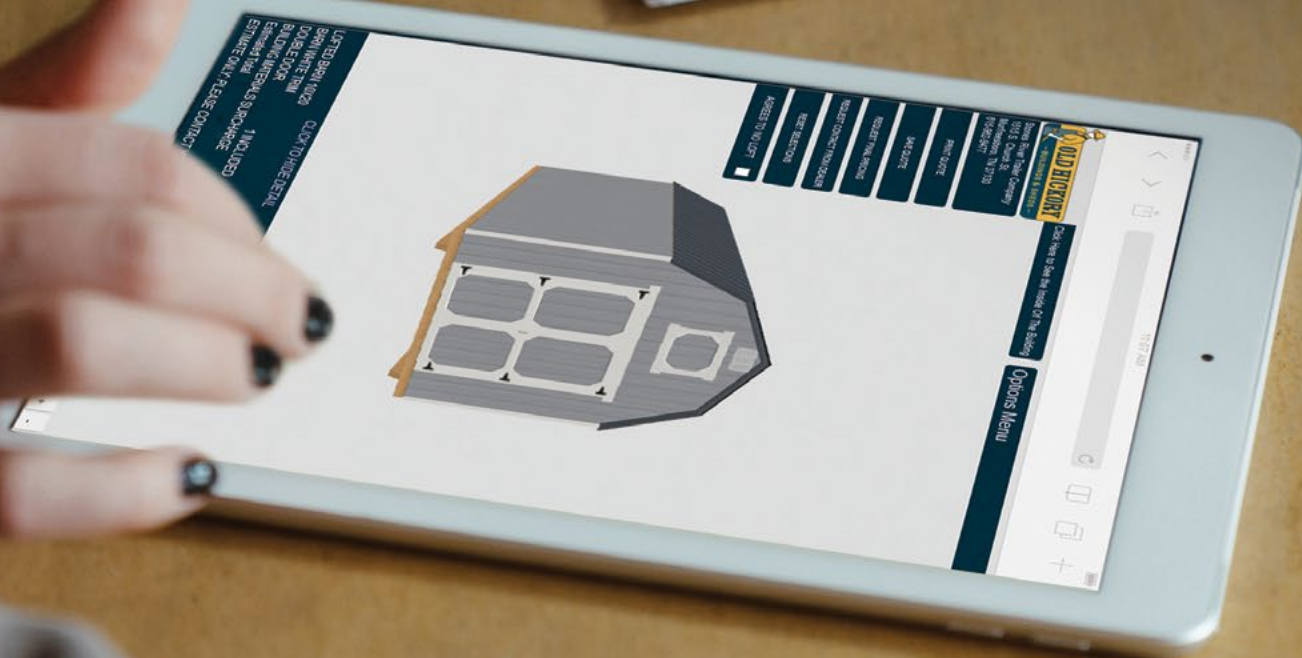




# BUILD — & — PRICE

VISIT [OLDHICKORYSHEDS.COM](http://OLDHICKORYSHEDS.COM)  
TO DESIGN & CUSTOMIZE  
YOUR OWN BUILDING

Our proprietary online 3D shed configurator is fully loaded with all of our design options and works smoothly on mobile devices and desktops. Because we built our own system, you can be sure the building you design is the building you'll get. Compared to the generic systems shared by other brands, we keep ours fully updated so that it shows the detail of exactly what is being designed, ordered and built.



5.3.21  
(OHS\_FS-V001)

Old Hickory Sheds, LLC ©Copyright 2021 / All rights reserved.

Scan the QR code or visit  
[oldhickorysheds.com/priceguide](http://oldhickorysheds.com/priceguide)  
to view the Price Guide online.







## PRICE GUIDE



### Metal Colors

#### STANDARD METAL

Same price for Standard Metal or Shingle Roof.

RUSTIC RED	CHARCOAL	BLACK
BURNISHED SLATE	HUNTER GREEN	SILVER

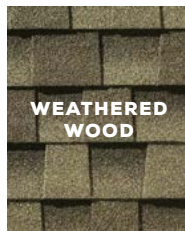
#### SPECIAL ORDER METAL

Adds one week to the lead-time and has a slight upcharge

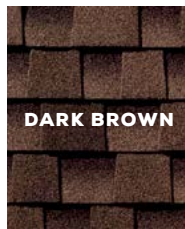


SEE YOUR  
LOCAL  
DEALER  
FOR COLOR  
OPTIONS

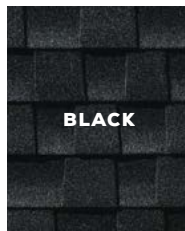
### Shingles



WEATHERED WOOD



DARK BROWN



BLACK

### Paint & Urethane Colors

#### STANDARD PAINT

One Standard Paint Color included in price.

BARN WHITE	NAVAJO	BEIGE
CLAY	BUCKSKIN	BROWN
GRAY SHADOW	GAP GRAY	BLACK
EVERGREEN	PINNACLE RED	SCARLET RED

#### URETHANE STAIN COLORS

MAHOGANY	HONEY GOLD	CHESTNUT BROWN
DARK EBONY	DRIFTWOOD	

Metal color availability and color names vary by region. Please consult your dealer for options in your area. Actual colors may vary from those displayed in brochure. See dealer for actual color swatch. OHS is not responsible for colors not matching the brochure.

**OLDHICKORYSHEDS.COM**

FACEBOOK.COM/OLDHICKORYBUILDINGS  
INSTAGRAM.COM/OLDHICKORYBUILDINGS

Scan the QR code or visit  
[oldhickorysheds.com/brochure](http://oldhickorysheds.com/brochure)  
to view & download our full brochure.







# STANDARD BUILDINGS



## LOFTED BARN

PRICE IS FOR 6' 3" WALLS (7' AVAIL)  
TREATED OR PAINTED ONE COLOR

SIZE	CASH PRICE*	RENT TO OWN (36 MO)	RENT TO OWN (48 MO)**
8x10	\$3,675	\$170 <sup>14</sup>	\$153 <sup>13</sup>
8x12	\$3,895	\$180 <sup>32</sup>	\$162 <sup>29</sup>
8x16	\$4,495	\$208 <sup>10</sup>	\$187 <sup>29</sup>
10x10	\$4,425	\$204 <sup>86</sup>	\$184 <sup>38</sup>
10x12	\$4,745	\$219 <sup>68</sup>	\$197 <sup>71</sup>
10x14	\$5,275	\$244 <sup>21</sup>	\$219 <sup>79</sup>
10x16	\$5,375	\$248 <sup>84</sup>	\$223 <sup>96</sup>
10x20	\$6,775	\$313 <sup>66</sup>	\$282 <sup>29</sup>
12x16	\$7,025	\$325 <sup>23</sup>	\$292 <sup>71</sup>
12x20	\$7,725	\$357 <sup>64</sup>	\$321 <sup>88</sup>
12x24	\$9,175	\$424 <sup>77</sup>	\$382 <sup>29</sup>
12x28	\$10,475	\$484 <sup>95</sup>	\$436 <sup>46</sup>
12x30	\$11,175	\$517 <sup>36</sup>	\$465 <sup>63</sup>
12x32	\$11,325	\$524 <sup>31</sup>	\$471 <sup>88</sup>
12x36	\$12,345	\$571 <sup>53</sup>	\$514 <sup>38</sup>
12x40	\$13,725	\$635 <sup>42</sup>	\$571 <sup>88</sup>
14x24	\$11,495	\$532 <sup>18</sup>	\$478 <sup>96</sup>
14x28	\$13,025	\$603 <sup>01</sup>	\$542 <sup>71</sup>
14x32	\$14,695	\$680 <sup>32</sup>	\$612 <sup>29</sup>
14x36	\$15,845	\$733 <sup>56</sup>	\$660 <sup>21</sup>
14x40	\$16,745	\$775 <sup>23</sup>	\$697 <sup>71</sup>
▶16x24	\$13,775	\$637 <sup>73</sup>	\$573 <sup>96</sup>
▶16x28	\$15,645	\$724 <sup>31</sup>	\$651 <sup>88</sup>
▶16x32	\$17,625	\$815 <sup>97</sup>	\$734 <sup>38</sup>
▶16x36	\$18,995	\$879 <sup>40</sup>	\$791 <sup>46</sup>
▶16x40	\$20,075	\$929 <sup>40</sup>	\$836 <sup>46</sup>

Up to 8ft of loft included in price. Additional charges apply if over 8ft. No discount for subtracting loft.

▶ 16ft wide buildings not available in all areas.

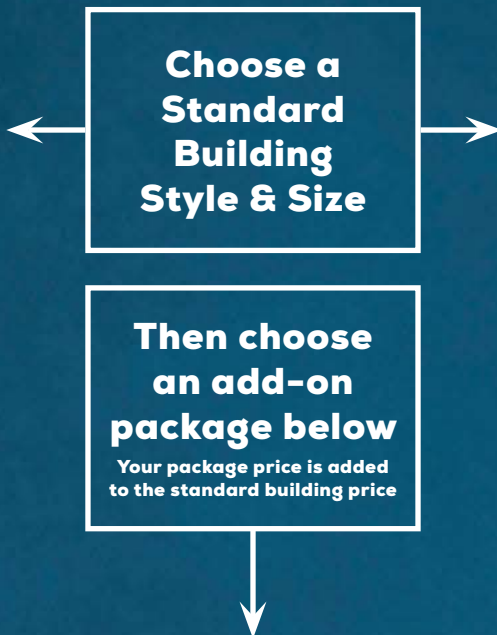


## UTILITY SHEDS

PRICE IS FOR 6' 3" WALLS (7' 8" AVAIL)  
TREATED OR PAINTED ONE COLOR

SIZE	CASH PRICE*	RENT TO OWN (36 MO)	RENT TO OWN (48 MO)**
8x8	\$2,925	\$135 <sup>42</sup>	\$121 <sup>88</sup>
8x10	\$3,045	\$140 <sup>97</sup>	\$126 <sup>88</sup>
8x12	\$3,345	\$154 <sup>86</sup>	\$139 <sup>38</sup>
8x16	\$4,375	\$202 <sup>55</sup>	\$182 <sup>29</sup>
10x10	\$3,895	\$180 <sup>32</sup>	\$162 <sup>29</sup>
10x12	\$4,125	\$190 <sup>97</sup>	\$171 <sup>88</sup>
10x14	\$4,745	\$219 <sup>68</sup>	\$197 <sup>71</sup>
10x16	\$4,975	\$230 <sup>32</sup>	\$207 <sup>29</sup>
10x20	\$6,175	\$285 <sup>88</sup>	\$257 <sup>29</sup>
12x16	\$6,275	\$290 <sup>51</sup>	\$261 <sup>46</sup>
12x20	\$7,025	\$325 <sup>23</sup>	\$292 <sup>71</sup>
12x24	\$8,045	\$372 <sup>45</sup>	\$335 <sup>21</sup>
12x28	\$9,225	\$427 <sup>08</sup>	\$384 <sup>38</sup>
12x30	\$9,945	\$460 <sup>42</sup>	\$414 <sup>38</sup>
12x32	\$10,425	\$482 <sup>64</sup>	\$434 <sup>38</sup>
12x36	\$11,225	\$519 <sup>68</sup>	\$467 <sup>71</sup>
12x40	\$12,475	\$577 <sup>55</sup>	\$519 <sup>79</sup>
14x24	\$10,545	\$488 <sup>19</sup>	\$439 <sup>38</sup>
14x28	\$11,875	\$549 <sup>77</sup>	\$494 <sup>79</sup>
14x32	\$12,775	\$591 <sup>44</sup>	\$532 <sup>29</sup>
14x36	\$15,095	\$698 <sup>84</sup>	\$628 <sup>96</sup>
14x40	\$16,245	\$752 <sup>08</sup>	\$676 <sup>88</sup>
▶16x24	\$12,595	\$583 <sup>10</sup>	\$524 <sup>79</sup>
▶16x28	\$14,195	\$657 <sup>18</sup>	\$591 <sup>46</sup>
▶16x32	\$15,225	\$704 <sup>86</sup>	\$634 <sup>38</sup>
▶16x36	\$18,095	\$837 <sup>73</sup>	\$753 <sup>96</sup>
▶16x40	\$19,445	\$900 <sup>23</sup>	\$810 <sup>21</sup>

▶ 16ft wide buildings not available in all areas



## ADD-ON PACKAGES



### PLAYHOUSE

Includes HOUSE-STYLE DOOR WITH 9 LITE WINDOW, 4' PORCH\*, two PORCH POSTS, and three 2' x 3' SINGLE PANE WINDOWS. The Utility Style Playhouse package will include 8' WALLS. Package price does not include wooden barn doors. \*Total length of building includes 4' PORCH.

**\$1,275**

Adds \$59.03 to 36 month rent  
Adds \$53.13 to 48 month rent\*\*

Building must include a porch to get package price.



### DELUXE PLAYHOUSE

Includes HOUSE-STYLE DOOR WITH 9 LITE WINDOW, PORCH, PORCH RAILING (Included porch railing is 3 sections that are approx. 4' each.), four PORCH POSTS, and five 2' x 3' SINGLE PANE WINDOWS. The Utility Style Deluxe Playhouse Package will also include 8' WALLS. Minimum size is 12' x 24'. Package price does not include wooden barn doors. \*Total length of building includes 4' PORCH.

**\$2,065**

Adds \$95.60 to 36 month rent  
Adds \$86.04 to 48 month rent\*\*

Building must include a porch to get package price.



### GARAGE

Includes GARAGE DOOR, HOUSE-STYLE DOOR WITH NO WINDOW, one 2' x 3' SINGLE PANE WINDOW and 12" ON CENTER FLOOR JOISTS. The Utility Style Garage Package will also include 8' WALLS. Package price does not include wooden barn doors. Occupancy class not intended for use as a 'Private Garage' as defined by IBC.

**9' GARAGE DOOR**

**\$1,445**

Adds \$66.90 to 36 month rent  
Adds \$60.21 to 48 month rent\*\*

**8' GARAGE DOOR**

**\$1,430**

Adds \$66.20 to 36 month rent  
Adds \$59.58 to 48 month rent\*\*

Building must include a garage door and house-style door with no window to qualify for package price.



### SIDE PORCH

Includes HOUSE-STYLE DOOR WITH 9 LITE WINDOW, PORCH, PORCH RAILING (included porch railing is approx. 4'), one PORCH POST, two 2' x 3' SINGLE PANE WINDOWS and DOUBLE WOODEN BARN DOORS. The Utility Style Side Porch package will also include 8' WALLS. \*Total length of building includes 4' porch.

**\$1,445**

Adds \$66.90 to 36 month rent  
Adds \$60.21 to 48 month rent\*\*

Building must include a porch to get package price.



### SHED DORMER

Available only on Utility Sheds

Includes three 10" x 29" WINDOWS in dormer. Only available on 8', 10' & 12' wide buildings. Inside wall heights are 81" for T1-11 siding and 82.5" for painted LP Smart Panel. More than one dormer can be added to building if size permits. Add \$1,375 for each additional dormer.

**\$1,375**

Adds \$63.66 to 36 month rent  
Adds \$57.29 to 48 month rent\*\*



Engineer Certified buildings are certified for 105 mph winds and 30 psf Ground Snow Load (Barn & Utility Shed) or 60 psf Ground Snow Load (Lofted Barn) (wind rating requires customer supplied anchors). Higher Snow Load options available. See options table for pricing.





# SPECIALTY BUILDINGS



# BUILD ON SITE



## BARNs

WALL HEIGHT IS 4'  
TREATED OR PAINTED ONE COLOR

SIZE	CASH PRICE*	RENT TO OWN (36 MO)	RENT TO OWN (48 MO)**
8x8	\$2,695	\$124 <sup>77</sup>	\$112 <sup>29</sup>
8x10	\$2,925	\$135 <sup>42</sup>	\$121 <sup>88</sup>
8x12	\$3,045	\$140 <sup>97</sup>	\$126 <sup>88</sup>
8x16	\$3,895	\$180 <sup>32</sup>	\$162 <sup>29</sup>
10x10	\$3,525	\$163 <sup>19</sup>	\$146 <sup>88</sup>
10x12	\$3,775	\$174 <sup>77</sup>	\$157 <sup>29</sup>
10x14	\$4,245	\$196 <sup>53</sup>	\$176 <sup>88</sup>
10x16	\$4,425	\$204 <sup>86</sup>	\$184 <sup>38</sup>
10x20	\$5,375	\$248 <sup>84</sup>	\$223 <sup>96</sup>
12x16	\$5,745	\$265 <sup>97</sup>	\$239 <sup>38</sup>



## STUDIO SHEDS

FRONT HEIGHT INCREASES WITH WIDTH  
TREATED OR PAINTED ONE COLOR

SIZE	CASH PRICE*	RENT TO OWN (36 MO)	RENT TO OWN (48 MO)**
8x12	\$3,520	\$162 <sup>96</sup>	\$146 <sup>67</sup>
8x16	\$4,550	\$210 <sup>65</sup>	\$189 <sup>58</sup>
10x10	\$4,070	\$188 <sup>43</sup>	\$169 <sup>58</sup>
10x12	\$4,300	\$199 <sup>07</sup>	\$179 <sup>17</sup>
10x14	\$4,920	\$227 <sup>78</sup>	\$205 <sup>00</sup>
10x16	\$5,150	\$238 <sup>43</sup>	\$214 <sup>58</sup>
10x20	\$6,350	\$293 <sup>98</sup>	\$264 <sup>58</sup>
12x16	\$6,450	\$298 <sup>61</sup>	\$268 <sup>75</sup>
12x20	\$7,200	\$333 <sup>33</sup>	\$300 <sup>00</sup>
12x24	\$8,220	\$380 <sup>56</sup>	\$342 <sup>50</sup>
12x28	\$9,400	\$435 <sup>19</sup>	\$391 <sup>67</sup>
12x30	\$10,120	\$468 <sup>52</sup>	\$421 <sup>67</sup>
12x32	\$10,600	\$490 <sup>74</sup>	\$441 <sup>67</sup>
12x36	\$11,400	\$527 <sup>78</sup>	\$475 <sup>00</sup>
12x40	\$12,650	\$585 <sup>65</sup>	\$527 <sup>08</sup>
14x24	\$10,720	\$496 <sup>30</sup>	\$446 <sup>67</sup>
14x28	\$12,050	\$557 <sup>87</sup>	\$502 <sup>08</sup>
14x32	\$12,950	\$599 <sup>54</sup>	\$539 <sup>58</sup>
14x36	\$15,270	\$706 <sup>94</sup>	\$636 <sup>25</sup>
14x40	\$16,420	\$760 <sup>19</sup>	\$684 <sup>17</sup>

Build on site requires additional fees paid to the builder.

See local dealer for details.



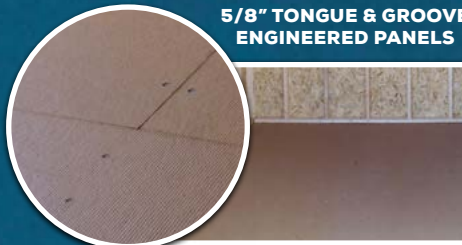
## FLOORING OPTIONS

YOU CHOOSE:

5/8" T&G UNTREATED PLYWOOD FLOORING  
OR 5/8" T&G ENGINEERED PANELS FLOORING  
(SAME PRICE)



5/8" TONGUE & GROOVE  
UNTREATED PLYWOOD



5/8" TONGUE & GROOVE  
ENGINEERED PANELS

UPGRADE: 3/4" FLOORING (SEE OPTIONS TABLE FOR PRICING)



## ANIMAL SHELTERS

WALL HEIGHT IS 8'  
TREATED OR PAINTED ONE COLOR



### ANIMAL SHELTER FEATURES

- Comes standard with 8ft tall walls.
- Standard one stall per 20 feet of length or less (not counting tack room), unless specifically ordered differently.
- Additional stalls (includes opening and divider) can be added for \$485 per stall (optional).

### TACK ROOM

- \$130/foot of length (minimum of 4ft). (Tack Room starts on an outside end wall. Add \$485 to start on an inside divider wall.)
- 3ft Wooden Barn door on all tack rooms. Upgrade to 4ft Wooden Barn door for \$30 (where applicable).

Buildings will be set directly on ground with no blocking. Ground must be suitable for application prior to delivery.

### ANIMAL SHELTER SECURITY DEPOSITS\*

- \$200:** 8ft & 10ft wide buildings
- \$600:** 12ft wide buildings
- \$1,000:** 14ft wide buildings
- \$2,000:** 16ft wide buildings

SIZE	CASH PRICE*	RENT TO OWN (36 MO)	RENT TO OWN (48 MO)**
8x12	\$3,520	\$162 <sup>96</sup>	\$146 <sup>67</sup>
8x16	\$4,550	\$210 <sup>65</sup>	\$189 <sup>58</sup>
10x10	\$4,070	\$188 <sup>43</sup>	\$169 <sup>58</sup>
10x12	\$4,300	\$199 <sup>07</sup>	\$179 <sup>17</sup>
10x14	\$4,920	\$227 <sup>78</sup>	\$205 <sup>00</sup>
10x16	\$5,150	\$238 <sup>43</sup>	\$214 <sup>58</sup>
10x20	\$6,350	\$293 <sup>98</sup>	\$264 <sup>58</sup>
12x16	\$6,450	\$298 <sup>61</sup>	\$268 <sup>75</sup>
12x20	\$7,200	\$333 <sup>33</sup>	\$300 <sup>00</sup>
12x24	\$8,220	\$380 <sup>56</sup>	\$342 <sup>50</sup>
12x28	\$9,400	\$435 <sup>19</sup>	\$391 <sup>67</sup>
12x30	\$10,120	\$468 <sup>52</sup>	\$421 <sup>67</sup>
12x32	\$10,600	\$490 <sup>74</sup>	\$441 <sup>67</sup>
12x36	\$11,400	\$527 <sup>78</sup>	\$475 <sup>00</sup>
12x40	\$12,650	\$585 <sup>65</sup>	\$527 <sup>08</sup>
14x24	\$10,720	\$496 <sup>30</sup>	\$446 <sup>67</sup>
14x28	\$12,050	\$557 <sup>87</sup>	\$502 <sup>08</sup>
14x32	\$12,950	\$599 <sup>54</sup>	\$539 <sup>58</sup>
14x36	\$15,270	\$706 <sup>94</sup>	\$636 <sup>25</sup>
14x40	\$16,420	\$760 <sup>19</sup>	\$684 <sup>17</sup>
➤16x24	\$12,770	\$591 <sup>20</sup>	\$532 <sup>08</sup>
➤16x28	\$14,370	\$665 <sup>28</sup>	\$598 <sup>75</sup>
➤16x32	\$15,400	\$712 <sup>96</sup>	\$641 <sup>67</sup>
➤16x36	\$18,270	\$845 <sup>83</sup>	\$761 <sup>25</sup>
➤16x40	\$19,620	\$908 <sup>33</sup>	\$817 <sup>50</sup>
➤ 16ft wide buildings not available in all areas			

## SIDING OPTIONS

T1-11  
PRESSURE  
TREATED

NO ADDITIONAL CHARGE

FIR

NO ADDITIONAL CHARGE

LP SMART  
PANEL

NO ADDITIONAL CHARGE



# OPTIONS & ADD-ONS

## WINDOW OPTIONS

<b>W1</b>	<b>24" x 27" LOFT WINDOW</b> (IN LOFT ONLY; DOES NOT FIT ABOVE GARAGES)	<b>\$140</b>
<b>W2</b>	<b>2'x3' SINGLE PANE WINDOW</b>	<b>\$140</b>
<b>W3S</b>	<b>2'x3' DOUBLE PANE WINDOW</b>	<b>\$240</b>
<b>W3D</b>	<b>3'x3' SINGLE PANE WINDOW</b>	<b>\$160</b>
<b>W4S</b>	<b>3'x3' DOUBLE PANE WINDOW</b>	<b>\$310</b>
<b>W4D</b>	<b>SHUTTER TRIM</b>	<b>\$60 PER WINDOW</b>
<b>W5</b>	<b>10" x 35" WINDOW</b> (FITS 4' SINGLE BARN DOOR)	<b>\$125</b>
<b>W6</b>	<b>10" x 29" WINDOW</b> (FITS DOUBLE BARN DOOR)	<b>\$105</b>

## DOOR OPTIONS

<b>D1</b>	<b>SINGLE 3' WOODEN BARN DOOR</b>	<b>\$110</b>
<b>D2</b>	<b>SINGLE 3' WOODEN BARN DOOR WITH WINDOW</b>	<b>\$215</b>
<b>D3</b>	<b>SINGLE 4' WOODEN BARN DOOR</b>	<b>\$140</b>
<b>D4</b>	<b>SINGLE 4' WOODEN BARN DOOR WITH WINDOW</b>	<b>\$260</b>
<b>D5</b>	<b>DOUBLE WOODEN BARN DOORS</b>	<b>\$220</b>
<b>D6</b>	<b>DOUBLE WOODEN BARN DOORS WITH WINDOWS</b>	<b>\$430</b>
<b>D7</b>	<b>HOUSE - STYLE DOOR, NO WINDOW</b> (OPENS IN & TO THE RIGHT ONLY)	<b>\$475</b>
<b>D8</b>	<b>HOUSE - STYLE DOOR, 9 LITE WINDOW</b> (OPENS IN & TO THE RIGHT ONLY)	<b>\$615</b>
<b>D9</b>	<b>OPENING LOFT DOOR</b> (LOFTED BARNS ONLY)	<b>\$90</b>
<b>D10</b>	<b>9'x7' GARAGE DOOR</b> (WALL MUST BE AT LEAST 12' WIDE x 8' TALL) (12" ON CENTER FLOOR JOISTS INCLUDED)	<b>\$1,085</b>
<b>D11</b>	<b>8'x7' GARAGE DOOR</b> (WALL MUST BE AT LEAST 10' WIDE x 8' TALL) (12" ON CENTER FLOOR JOISTS INCLUDED)	<b>\$1,070</b>

## FLOORING OPTIONS

<b>ADDITIONAL SKIDS</b> (EACH)	<b>\$6/ft</b>
<b>3/4" FLOORING</b> (PRICED PER SQUARE FOOT)	<b>\$0.75/sq ft</b>
<b>2x6 FLOOR JOISTS</b> (STANDARD ON 14' & 16' WIDE BUILDINGS)	<b>\$0.55/sq ft</b>
<b>12" ON CENTER FLOOR JOISTS</b> (STANDARD ON GARAGES)	<b>\$0.55/sq ft</b>

## PAINT & URETHANE OPTIONS

<b>PAINT</b> (ONE STANDARD COLOR)	<b>FREE</b>
<b>PAINTED BUILDING TRIM</b> (SECOND COLOR / PAINT ONLY)	<b>\$70</b>
<b>EACH ADDITIONAL COLOR</b> (INCLUDES DOORS - PAINT OR URETHANE   TRIM ON DOORS & SHUTTERS - PAINT ONLY)	<b>\$70</b>
<b>UPGRADE TO URETHANE OR CUSTOM PAINT COLOR</b> (8' & 10' WIDE BUILDINGS)	<b>ADD \$140</b>
<b>UPGRADE TO URETHANE OR CUSTOM PAINT COLOR</b> (12', 14' & 16' WIDE BUILDINGS)	<b>ADD \$275</b>

## OTHER OPTIONS

<b>P1</b>	<b>HOUSE WRAP VAPOR BARRIER</b> (ON WALLS ONLY)	<b>\$1.75/sq ft</b>
<b>P2</b>	<b>TAR PAPER</b> (UNDER ROOFING ONLY, RECOMMENDED FOR SHINGLE ROOFS)	<b>\$1.75/sq ft</b>
<b>H1</b>	<b>7' TALL WALLS</b> (81" INSIDE) (UTILITIES)	<b>\$175</b>
<b>H2</b>	<b>8' TALL WALLS</b> (92" INSIDE) (UTILITIES)	<b>\$175</b>
<b>I1</b>	<b>WORKBENCH</b> (PRICED PER FOOT OF WIDTH)	<b>\$17/ft</b>
<b>I2</b>	<b>SHELVES</b> (3 TIER) (PRICED PER FOOT OF WIDTH)	<b>\$17/ft</b>
<b>I3</b>	<b>LOFT</b> (PRICED PER FOOT OF DEPTH)	<b>\$28/ft</b>
<b>E1</b>	<b>EXTRA PORCH POST</b>	<b>\$50/each</b>
<b>E2</b>	<b>PORCH RAILING</b>	<b>\$17/ft</b>
<b>E3</b>	<b>6" FRONT &amp; BACK ROOF OVERHANG</b> (GABLE END WALLS)	<b>\$345</b>
<b>E4</b>	<b>7/12 PITCH</b> (6' & 7' WALLS ONLY) (UTILITY ONLY) (8', 10' & 12' WIDE ONLY)	<b>\$345</b>
<b>F1</b>	<b>16" ON CENTER TRUSSES</b> (PAINTED ONLY)	<b>\$0.40/sq ft</b>
<b>F2</b>	<b>16" ON CENTER STUDS &amp; TRUSSES</b> (TREATED ONLY)	<b>\$1/sq ft</b>
	<b>SPECIAL ORDER METAL ROOF COLOR</b>	<b>\$75</b>
	<b>SNOW LOAD 60 PSF</b> (STANDARD ON LOFTED BARNS)	<b>\$1.50/sq ft</b>
	<b>SNOW LOAD 140 PSF</b>	<b>\$3.50/sq ft</b>

- \*Prices shown include 3% discount offered for purchases made with cash or check. Credit card purchases are not eligible for the discounted price and will be priced 3% higher.
- One color paint/water sealer included in above price. Urethane and additional colors are extra (excluding Build On Site).
- 12ft wide and over buildings are measured across the eaves due to DOT regulations (all others are measured from outside corners).
- \*\*Not available at all locations. See dealer for details.
- All 8ft wide buildings come with a single door (excluding packages).
- All 10ft, 12ft, 14ft & 16ft wide buildings come with double doors (excluding packages).
- Available RTO terms may change by location. See your local dealer for details.
- Add package price to Lofted or Utility Style Buildings only. These are package deals, options may be removed but no credit given on price.

Old Hickory Sheds, LLC and its associates are not responsible for permits, snow/wind load requirements, covenant searches, restrictions, setbacks, yard damage, or underground damage. In very rare cases, underground footers may be required by local building codes. Old Hickory Sheds does not offer digging or footer services and these are not included in free set up, however we can work with customer or contractor when required for an additional cost. Please contact your local Building Inspector and/or Homeowner's Association for information on requirements and restrictions. It is the customer's responsibility to decide if ground conditions are unsuitable for delivery. Old Hickory has the right to refuse any sale prior to the time when it is accepted and approved by Old Hickory's corporate office and the building is set up at customer's location.

**ALL PRICES SUBJECT TO CHANGE.**

4.20.21 (OHS\_PG\_EAST-5375) Old Hickory Sheds, LLC ©Copyright 2021 | All rights reserved.

# RENT TO OWN

## SECURITY DEPOSITS\*

<b>\$100:</b> 8ft & 10ft wide buildings
<b>\$300:</b> 12ft wide buildings
<b>\$1,000:</b> 14ft wide buildings
<b>\$1,500:</b> 16ft wide buildings

\*Excludes Animal Shelters & Build on Site.

# DELIVERY & SETUP

- **Free delivery and easy setup within 30 miles.**
- **Please consult your local dealer for the most up-to-date delivery lead times.**
- **No site preparation necessary if site is no more than 3 feet out of level.**
- **Customer has the responsibility to decide if ground conditions are unsuitable for delivery. We are not responsible for yard damage.**
- **Site must be accessible by truck and trailer.**

Drivers can supply blocks for \$3.50 each. Free Delivery covers one trip up to 30 miles one way. Trips over 30 miles are subject to a \$3/mile (8ft & 10ft wide), \$3.50/mile (12ft wide), \$4.50/mile (14ft & 16ft wide) charge one way. Free setup includes leveling the building, starting with one corner at ground level and raising it up to a maximum of 3 feet. If leveling requires 1 foot or less, pressure treated wood may be used. Otherwise, customer may supply concrete blocks which are placed on top of the ground, or we can supply concrete blocks for \$3.50 each.

In very rare cases, underground footers may be required by local building codes. Old Hickory Sheds does not offer digging or footer services and these are not included in free set up, however we can work with customer or contractor when required for an additional cost.

Please contact your local Building Inspector and/or Homeowner's Association for information on requirements and restrictions. The customer will be responsible for the mileage charge as well as the cost of any additional trips.



**EAST**

v001